

What is RWI Phonics?	<a href="#">What is RWI phonics?</a>
Understanding Phonics	<a href="#">Understanding Phonics</a>
Saying the Sounds	<a href="#">Saying the Sounds</a>
Listening to your child read	<a href="#">Listening to your child read</a>
10 things to remember when you read with your child	<a href="#">10 things to remember when you read with your child</a>
Reading Stretchy Sounds	<a href="#">Reading Stretchy Sounds</a>
Reading Bouncy Sounds	<a href="#">Reading Bouncy Sounds</a>
Sound Blending	<a href="#">Sound Blending</a>
Reading Diagraphs	<a href="#">Reading Diagraphs</a>
Spelling	<a href="https://schools.ruthmiskin.com/training/view/hp9sLN3l/czSHVsJy">https://schools.ruthmiskin.com/training/view/hp9sLN3l/czSHVsJy</a>
Handwriting	<a href="#">Handwriting</a>
Learning to Blend Lessons for Parents	<a href="#">Blending Lesson Example 1</a> <a href="#">Blending Lesson Example 2</a> <a href="#">Blending Lesson Example 3</a>

## Useful Phonics Information Links for Parents

### Set 1 Sounds

Set 1 Sounds - Word Time	Set 1 Sounds – Spelling Time
<a href="#">1.1</a>	<a href="#">m spelling</a>
<a href="#">1.1</a>	<a href="#">a spelling</a>
<a href="#">1.2</a>	<a href="#">s spelling</a>
<a href="#">1.2</a>	<a href="#">d spelling</a>
<a href="#">1.2</a>	<a href="#">t spelling</a>
<a href="#">1.2</a>	<a href="#">i spelling</a>
<a href="#">1.2</a>	<a href="#">n spelling</a>
<a href="#">1.2</a>	<a href="#">p spelling</a>
<a href="#">1.2</a>	<a href="#">g spelling</a>
<a href="#">1.2</a>	<a href="#">o spelling</a>
<a href="#">1.3</a>	<a href="#">c spelling</a>
<a href="#">1.3</a>	<a href="#">k spelling</a>
<a href="#">1.3</a>	<a href="#">u spelling</a>
<a href="#">1.3</a>	<a href="#">b spelling</a>
<a href="#">1.3</a>	<a href="#">f spelling</a>
<a href="#">1.3</a>	<a href="#">e spelling</a>
<a href="#">1.3</a>	<a href="#">l spelling</a>
<a href="#">1.3</a>	<a href="#">h spelling</a>
<a href="#">1.3</a>	<a href="#">sh spelling</a>
<a href="#">1.3</a>	<a href="#">r spelling</a>
<a href="#">1.4</a>	<a href="#">j spelling</a>
<a href="#">1.4</a>	<a href="#">v spelling</a>
<a href="#">1.4</a>	<a href="#">y spelling</a>
<a href="#">1.4</a>	<a href="#">w spelling</a>

	<a href="#">th spelling</a>
	<a href="#">z spelling</a>
	<a href="#">ch spelling</a>
	<a href="#">qu spelling</a>
	<a href="#">x spelling</a>
	<a href="#">ng spelling</a>
	<a href="#">nk spelling</a>

## Set 2 Sounds

Set 2 Sounds - Word Time	Set 2 Sounds – Spelling Time
<a href="#">ay sound</a>	<a href="#">ay spelling</a>
<a href="#">ee sound</a>	<a href="#">ee spelling</a>
<a href="#">igh sound</a>	<a href="#">igh spelling</a>
<a href="#">ow sound</a>	<a href="#">ow sound</a>
<a href="#">oo (zoo) sound</a>	<a href="#">oo (zoo) spelling</a>
<a href="#">oo (look) sound</a>	<a href="#">oo (look) spelling</a>
<a href="#">ar sound</a>	<a href="#">ar spelling</a>
<a href="#">or sound</a>	<a href="#">or spelling</a>
<a href="#">air sound</a>	<a href="#">air spelling</a>
<a href="#">ir sound</a>	<a href="#">ir sound</a>
<a href="#">ou sound</a>	<a href="#">ou spelling</a>
<a href="#">oy sound</a>	<a href="#">oy spelling</a>

## Set 3 Sounds

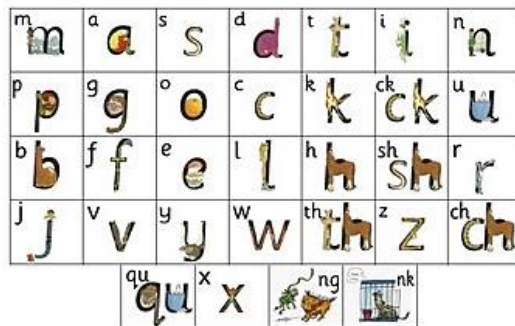
Set 3 Sounds - Word Time	Set 3 Sounds – Spelling Time
<a href="#">ea sound</a>	<a href="#">ea spelling</a>
<a href="#">oi sound</a>	<a href="#">oi spelling</a>
<a href="#">a e sound</a>	<a href="#">a-e spelling</a>
<a href="#">i e sound</a>	<a href="#">i-e spelling</a>

<u>o e sound</u>	<u>o-e spelling</u>
<u>u e sound</u>	<u>u-e spelling</u>
<u>aw sound</u>	<u>aw spelling</u>
<u>are sound</u>	<u>are spelling</u>
<u>ur sound</u>	<u>ur spelling</u>
<u>er sound</u>	<u>er spelling</u>
<u>ow sound</u>	<u>ow sound</u>
<u>ai sound</u>	<u>ai sound</u>
<u>oa sound</u>	<u>oa sound</u>
<u>ew sound</u>	<u>ew sound</u>
<u>ire sound</u>	<u>ire sound</u>
<u>ear sound</u>	<u>ear sound</u>
<u>ure sound</u>	<u>ure sound</u>

**How to support your child depending on their RWI group:**

Set 1 A, B, C	Ditty	Red	Green	Purple	Pink	Orange	Yellow	Blue	Grey	Literacy & Language
<p>Say the Set 1 single-letter sounds</p> <p>Blend/Read 3 sound words independently e.g. mad, sat, hat, etc</p> <p>Spell words using Fred Fingers</p>	<p>Say the Set 1 single-letter and special friends sounds</p> <p>Blend/Read 3 sound words independently</p> <p>Read 3 sound nonsense words e.g. gip, mal, tem, etc</p> <p>Spell words using Fred Fingers</p>	<p>Speedily say the Set 1 Sounds – single-letter and special friend sounds</p> <p>Read 4 &amp; 5 sound words e.g. frog, ducks, etc</p> <p>Read 3 &amp; 4 sound nonsense words e.g. shof, tech, etc</p> <p>Spell words using Fred Fingers</p>	<p>Read words from the Set 2 sounds e.g. ay – play, may, day, say, etc</p> <p>Speedily Read words from the Set 1 sounds e.g. frog, cat, swim, etc</p> <p>Read 4 &amp; 5 sound nonsense words e.g. mighp, chowf, kneem, etc</p> <p>Spell words using Fred Fingers</p>	<p>Read the first six Set 2 sounds (ay, ee, igh, ow, oo, oo) speedily</p> <p>Read words from the Set 2 sounds including longer words</p> <p>Read Set 1 phonics words speedily</p> <p>Read 4 &amp; 5 sound nonsense words e.g. phoop, fleevs, choor, etc</p> <p>Spell words using Fred Fingers</p>	<p>Read all Set 2 sounds speedily</p> <p>Read words from the Set 2 sounds including longer words</p> <p>Start to read Set 3 Sounds and words from the Set 3 sounds e.g. leap, etc</p> <p>Read 4 &amp; 5 sound nonsense words e.g. martp, etc</p> <p>Spell using Fred Fingers, focus on spelling words with the Set 2 sounds</p>	<p>Read all Set 3 sounds</p> <p>Read words from the Set 3 sounds including longer words</p> <p>Read words with the Set 1 and Set 2 phonics words speedily</p> <p>Read nonsense words with the Set 2 &amp; 3 sounds e.g. maipt, etc</p> <p>Spell using Fred Fingers, focus on spelling words with the Set 2 sounds</p>	<p>Read the first six Set 3 sounds (ea, oi, a-e, i-e, o-e, u-e) speedily</p> <p>Read words from the Set 1,2,3 sounds including longer words</p> <p>Read nonsense words with the Set 2 &amp; 3 sounds e.g. shoir, etc</p> <p>Spell using Fred Fingers, focus on spelling words with the Set 2 and 3 sounds</p>	<p>Read all Set 3 sounds speedily</p> <p>Read words from the Set 1,2,3 sounds including longer words speedily</p> <p>Read nonsense words 3 sounds e.g. mipe, etc</p> <p>Spell using Fred Fingers, focus on spelling words with the Set 2 &amp; 3 sounds</p>	<p>Read Set 1, 2 and 3 sounds and all words with these sounds, including longer words speedily</p> <p>Read unfamiliar multi-syllabic words</p> <p>Read nonsense words speedily</p> <p>Spell using Fred Fingers: multi-syllabic, Set 2 and 3 words</p>	<p>Speedily read all words that contain the Set 1,2,3 sounds and read these sounds in multi-syllabic words</p> <p>Develop comprehension skills and the ability to read with greater fluency and expression</p> <p>Have an excellent understanding of the information in a non-fiction text or story during independent reading tasks</p>

### Set 1 Sounds



### Set 2 Sounds



### Set 3 Sounds

